



Your local Dealer:

When performance is everything

USER MANUAL

Acoustics & Engineering Pte Ltd

11 Changi North Street 1 #02-01, Changi North Industrial Estate, Singapore 498823
Tel: (65) 62140146 Fax: (65) 62141606 Email: aeonline@singnet.com.sg Website: www.ane.com.sg

SLS
scandinavian
leisure
systems

Shortcut keys

- ALT + M Minimizes application
- ALT + V Displays version information
- ESC Exit DJ2010 USB

USE DIFFERENT VARIATIONS, CREATE
and
ENJOY!

DJ2010 USB



The DJ2010 Default skin.



The DJ -panel.

BEFORE YOU INSTALL THE DJ2010 USB PLEASE, PREPARE YOUR SYSTEM!

System requirements:

- Desktop or laptop PC
- Windows 2000 / XP OS
- USB port
- AT LEAST 800MHz processor
- CD-ROM drive
- 1024*768*16 screen resolution capability
- Hard drive space for music
- 128 MB RAM

If you have Windows 2000 please install the following software:

- WINDOWS 2000 Service Pack 3
- WINDOWS Media Encoder v7.1
- DirectX 8.0 or higher
- Your computer manufacturer's latest drivers and patches

If you have Windows XP Home Edition please install the following software:

- Windows Media Encoder v7.1
- Your computer manufacturer's latest drivers and patches
- Latest operating system fixes available at Microsoft's Windows Update website

If you have Windows XP Professional please install the following software:

- Your computer manufacturer's latest drivers and patches
- Latest operating system fixes available at Microsoft's Windows Update web site

Effects

Brake / platter effect

- Select a song and start playback
- Press combo "@ PLAY"
- The song tempo starts dropping until playback stops
- Now press again "@ PLAY"
- The song starts gaining tempo until it reaches the normal value

Reverse play

- Select a song and start playback
- Now press "?"
- The song is now playing in reverse
- Press again "?"
- The song is playing forward again

Jumps between cuepoints (What an earth do I need 256 cuepoints for?)

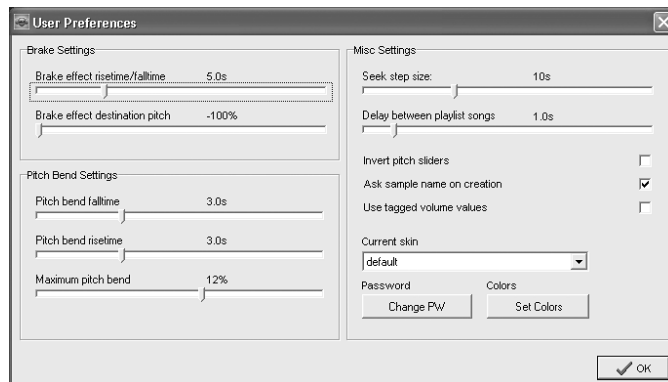
- Select a song and start playback
- Open the cuepoint editor
- As the song plays add cuepoints by pressing "+"
- Place cuepoints to the beginning of themes, end of themes etc.
- Use "<" and ">" to select between the cuepoints and
- Listen to the rhythm – you can now reorganize the whole song

Riffle effect

- Operates in the cuepoint editor
- Press "Cue" over and over again FAST
- By selecting good cuepoints you are able to awesome effects

Misc settings

- “Seek step size” slider controls jump duration when “@ >” or “@ <” is pressed during playback
- “Delay between playlist songs” tells the wait duration when “Coffee Break Player™” proceeds to next song
- “Invert pitch sliders” can be toggled to invert the effect when moving the faders
- “Ask sample name on creation” can be toggled to enable or disable the sample name query when a new sample is created
- “Use tagged volume values” controls if the playback volume is set to full volume or adjusted according to the metadata value
- “Shift + Cue cancels brake effect” setting controls if the cue point jump start releases the brake effect
- “Current skin” selects the current graphics set in use
- PASSWORD button allows you to change your login password
- COLORS button lets you pick the colors that are used by the program

**Windows system settings:****1. Disable screensaver function.**

- Double-click MY COMPUTER icon
- Double-click CONTROL PANEL icon
- Double-click DISPLAY icon
- Select SCREEN SAVER page
- Set the status as “None”
- Click “Apply”
- Click “OK”

2. Disable your computer’s own soundcards, if installed, to avoid hardware conflicts

- Double-click MY COMPUTER icon
- Double-click CONTROL PANEL icon
- Double-click SOUNDS AND MULTIMEDIA
- Select HARDWARE page
- Search your soundcard(s) from the list and
- Set the status as “Disabled”
- Click “OK”

3. Disable system sound scheme.

- Double-click MY COMPUTER icon
- Double-click CONTROL PANEL icon
- Double-click “Sounds and Multimedia”
- Select NO SOUNDS scheme
- Click “Apply”
- Click “OK”

4. Shut down unnecessary applications to free resources for DJ2010 USB.**5. Disable any real-time file protection systems like antivirus software for better performance.**

Now you are set to go for installation!

- Connect the DJ2010 USB control panel to your mixer with RCA -cables
- Connect the panel's USB to your computer's USB port
- Please, wait awhile, the system now recognises new devices
- Now, check that the system has found TWO USB SOUND MODULES
- Double-click MY COMPUTER icon
- Double-click CONTROL PANEL icon
- Double-click "Sounds and Multimedia"
- Click AUDIO page
- The SOUND PLAYBACK box should now display two USB soundcards
- IF your system displays additional soundcards disable them (as described above)
- In case of two USB sound modules, please proceed
- Load the installation disc to your CD-drive
- Click SETUP icon
- The installation software starts running
- Answer the questions with the YES button
- When the installation finishes run the DJ2010 USB application

First login

- You are prompted for username and password
 - ⇒ USER: Admin
 - ⇒ PASSWORD: Admin

User Settings (Option F5)

Brake settings

- BRAKE EFFECT RISETIME / FALLTIME slider controls the duration it takes for the brake effect to complete
- BRAKE EFFECT DESTINATION PITCH slider controls the pitch value the brake effect slows down to

Pitch bend settings

- PITCH BEND FALLTIME slider controls the duration it takes for the Pitch bend to normalize
- PITCH BEND RISETIME slider controls the duration it takes for the Pitch bend to reach destination value
- MAXIMUM PITCH BEND slider controls the destination value of the Pitch bend effect

Admin settings (Admin F1)

All users

- Add new users (icon located beside the trash can)
- Edit existing user profiles (choose the user from the list)
- Delete users (the trash can)

User's song library

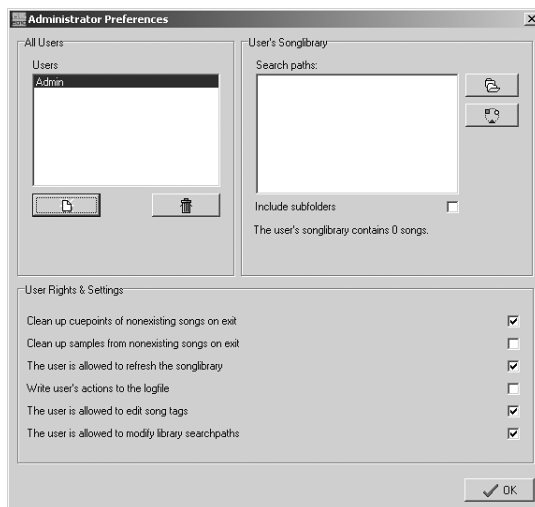
- Add search paths
- Remove search paths
- Pre-refresh the user's music library

PLEASE NOTE!

You can control the music your users can play by selecting search paths for them, refreshing the library and then removing the user's rights to edit the search paths.

User's rights and settings

- Select the privileges for each of your users

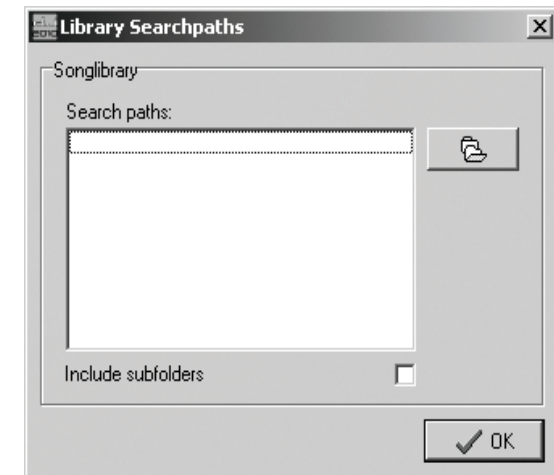


Adding songs to the music library

If you already have MP files at your hard drive:

1. Paths (F2)

- Press F4 button or click PATH (F4) icon
- Select the folder(s) where your music resides
- Check the "Include subfolders" if you wish to search also the subdirectories of the given folders
- Confirm by pressing "OK"



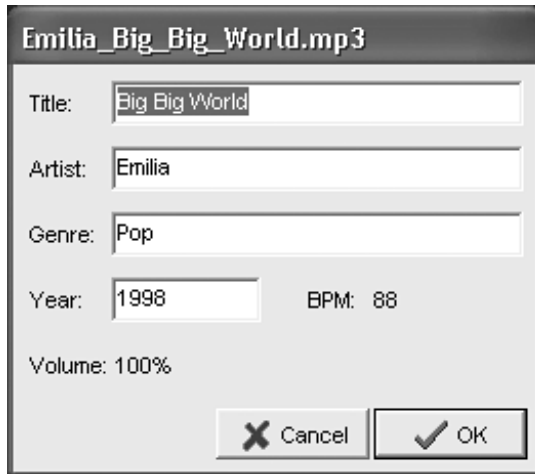
2. Refresh (F3)

- Press F3 button or REFRESH (F3) icon
- Please wait until the software finishes updating the music library



3. Tagging (F4)

- Select the song you want to edit and press F4 or click EDIT (F4) icon
- Edit window now appears on your screen
- Type in the information
- Confirm changes by pressing “OK”


















PLEASE NOTE!

You can analyze the volume and BPM values of your songs with the tools provided on the installation CD. SLS Volumes is for batch analyzing song volumes and SLS AutoBeater for automatic BPM analysis.

To remove files from your music library

- ⇒ Open the folder where the songs to be removed are
- ⇒ Delete or move the songs to another location not in your search paths
- ⇒ Refresh the library by pressing F3 or clicking the REFRESH (F3) icon

BUTTON COMBINATIONS	DESCRIPTION
@ PLAY	Start brake / platter -effect
@ -	Rescale fader (-4, -8, -16, -32, -64 %)
@ +	Rescale fader (+4, +8, +16, +32, +64 %)
@ CUE	Jump to the active QP and start playback
@ QP	Open the QP-editor
@ PITCH	If browsing opens the Coffee Break Player, otherwise displays playlist
A >	Fine tune loop start point, search forward
A <	Fine tune loop start point, search backward
B >	Fine tune loop end point, search forward
B <	Fine tune loop end point, search backward
@ >	Jump search forward
@ <	Jump search backward

DECK 1&2 BUTTONS	DESCRIPTION
	Open / close song
	Invert playback direction
	Control cuepoints
	Loop start
	Loop end
	Activate / deactivate loop
	Shift, used in button combinations
	Search backward
	Search forward
	Activate cuepoint
	Play
	Enable / disable pitch functions
	Increase tempo (finetuning)
	Decrease tempo (finetuning)
	Change tempo

Playback

Select song to the player (Decks 1&2)

- Browse the song library stepwise with “<” and “>”
- Browse the song library alphabetically with “A” and “B”
- Browse the song library by pages with “@ <” and “@ >”
- Sort the library by properties with “+” and “-”
- Add the selected song to a favorites list by pressing a number “1-9”
- Display one of the favorite lists by pressing “Ctrl” and “1-9”
- Display the whole library again by pressing “Ctrl” and “0”
- Open the active song by pressing “^”

Play, pause and cuepoints

- Open a song as described above
- To start playback press “Play”
- To pause playback and move the active QP here press “Play” again
- Restart playback by pressing “Play”
- To jump to the previously marked cuepoint press “Cue”
- Or to jump to the previously marked cuepoint and start playback immediately press combo “@ CUE”

Coffee Break Player™

- When browsing the song library press combo “@ PITCH”
- A new playlist window opens
- Select songs to the playlist by selecting the desired song and pressing “^”
- When you are done with the list press “Play” to activate the Coffee Break Player™
- Playback now continues until the whole playlist is finished, TAKE A BREAK AND ENJOY YOUR COFFEE!

Pitch

- Activate the pitch by pressing “Pitch”
- During playback move the fader located beside the player
- The song now changes its tempo when the fader is moved
- You can change the pitch mode by pressing “@ -” or “@ +”
- Deactivate the pitch by repressing “Pitch”
- The song’s tempo is immediately normalized

Pitch bend

- Press “+” during playback
- The song momentarily changes tempo and then returns to the original tempo
- Keep the “+” pressed
- The song starts gaining tempo until at top speed
- The “-” has the same effect, but slows down the tempo
- You can modify pitch bend properties at the user options

Loop

- Select a song and start playback
- When you encounter the point where you wish the loop to start press “A”
- When you encounter the point where you wish the loop to end press “B”
- The deck is now looping between the positions you chose
- To release the loop press “Loop”
- To reactivate the same loop press “Loop”
- You can adjust the start point of the loop by holding down “A” and simultaneously searching with “<” and “>”
- Similarly the end point of the loop can be adjusted by holding down “B” and searching with “<” and “>”

Search Mode

- Select a song and start playback
- Start precision search by pressing “<” or “>”
- Press or hold down “<” to search backward
- Press or hold down “>” to search forward
- Press “PLAY” to mark the active cuepoint here and restart playback
- If you don’t want to mark the active cuepoint here just wait a moment and the playback restarts automatically or if you just wish to stay here hold down “@”

Cuepoint editor

- Select a song to either one of the decks
- Start playback
- Press buttons “@ QP”
- The cuepoint editor window opens
- Add a cuepoint to the current playback position by pressing “+”
- Select desired cuepoint with “<” and “>”
- Remove the selected cuepoint by pressing “-”
- Fine tune cuepoints by holding down “Cue” and pressing “<” or “>”
- Close the cuepoint editor with combo “@ QP”

PLEASE NOTE!
You can save up to 256 cuepoints per song.

Sampler quick start

- Create a loop with deck 1 or 2
- Use the sampler “<>” to choose the deck from which to pick the sample
- Use “Pick” to create a sample from the active deck’s loop
- Press “Play” to play the newly created sample

Browsing and editing samples

- Browse the sample library up and down with “Stop” and “Play”
- Remove the active sample with ”Loop”
- Sort the samples by their properties with “+” and “-”
- Edit the selected sample by pressing “F4” or by clicking the button “Edit (F4)”

Sample playback

- Select the desired output deck with “<>”
- Select and open a sample
- Press “Play” to play the sample
- If you wish to repeat the sample over and over press “Loop”
- Control playback tempo with “+” and “-”